

FEATURES

Miniature 20A switching capabilities

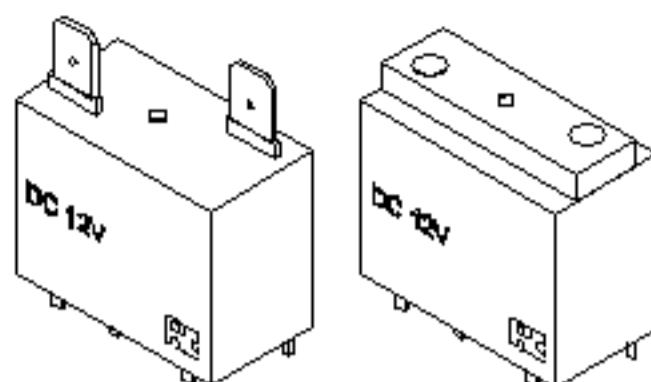
4.5KV dielectric coil to contact

Heavy load up to 5000VA

Applicable to motor switching

PCB & QC terminal

  Pending



SPECIFICATIONS

COIL RATING

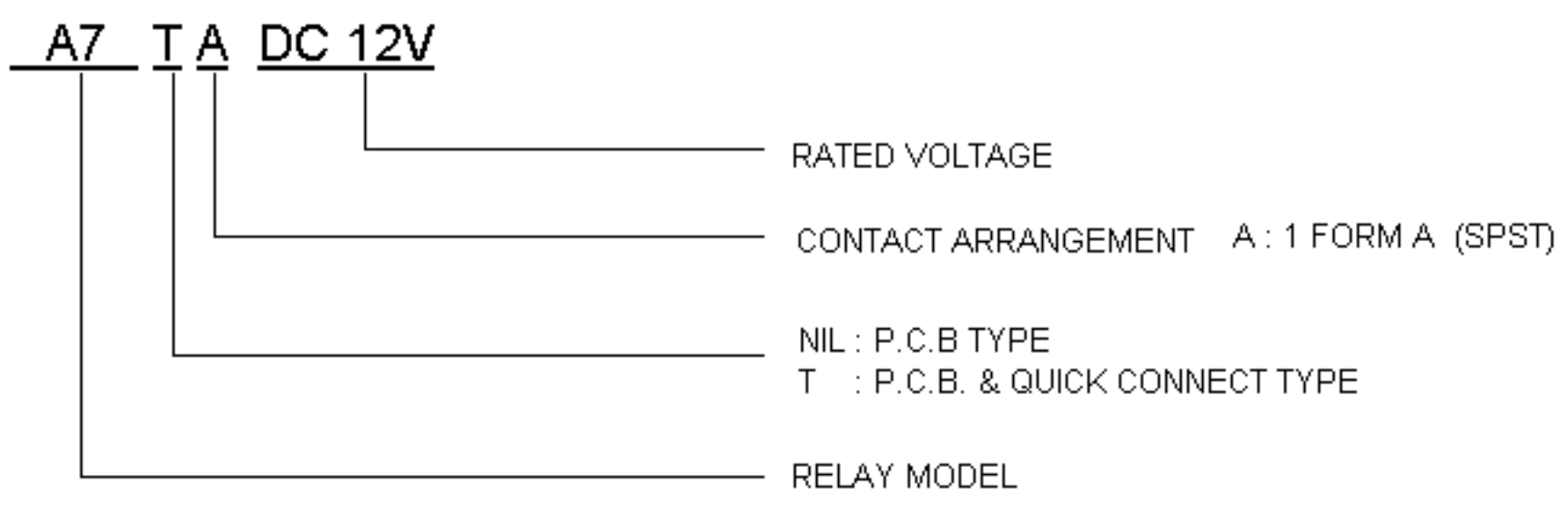
RATED VOLTAGE (V DC)	COIL RESISTANCE Ω +/- 10%	RATED CURRENT (mA)	MUST OPERATE VOLTAGE	MUST DROPOUT VOLTAGE	MAXIMUM VOLTAGE	POWER CONSUMPTION (W)
			% OF RATED VOLTAGE (At +20 °C)			
5	27.8	180	70 Max.	10 Min.	130	0.9
12	160	75				
24	640	37.5				

CHARACTERISTICS

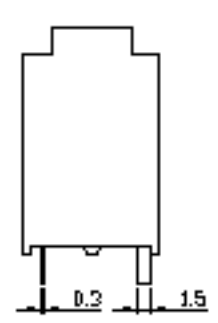
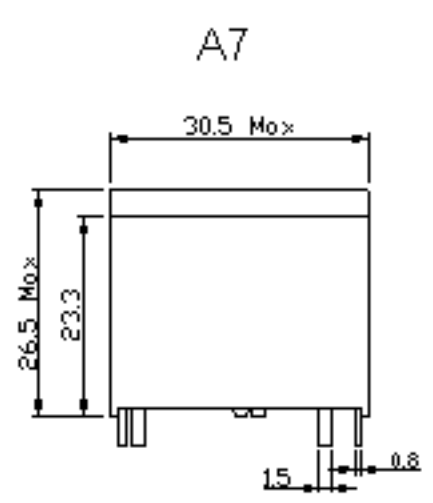
Contact Arrangement	SPST (1 Form A)
Contact Material	Silver Alloy
Contact Resistance	30m Ω (Measured at 1A 24VDC)
Contact Rating	Rate Load : 20A/250VAC 1HP 120VAC 2HP 240VAC Motor Load : Inrush 80A 0.3S (Cos ψ = 0.7) Break 20A (Cos ψ = 0.9)
Switching Capacity	5000VA Max.
Switching Voltage	250VAC Max.
Operate Time	20ms Max.
Release Time	10ms Max.
Insulation Resistance	1000M Ω Min.(500V DC)
Dielectric Strength	Between Open Contacts : 1000VAC 50Hz/min. Between Coil & Contact : 4500VAC 50Hz/min.
Shock Resistance	Malfunction : 196m/s ² Mechanical : 980m/s ²
Vibration Resistance	1.5mm Double Amplitude 10-55Hz
Ambient Temperature	-20°C to +70°C
Humidity	40 - 85% RH
Operation Life	Mechanical : 2 x 10 ⁶ Electrical : 10 ⁵ (At rated load)
Weight	23g

[Specifications are subject to change without notices.]

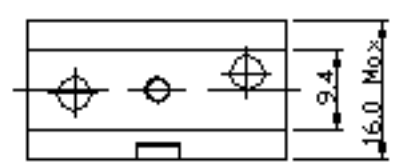
ORDERING INFORMATION



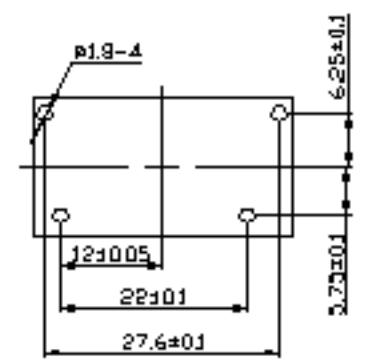
DIMENSIONS (UNIT:mm)



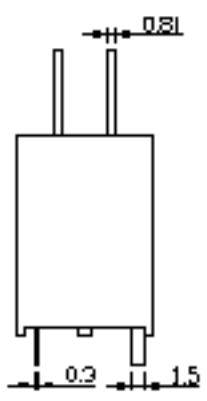
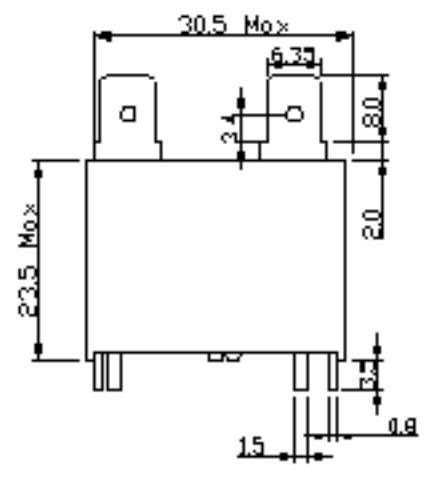
TOP VIEW



PCB LAYOUT



A7T



TOP VIEW

